

LIGHTNING TRANSIENTS INDUCED IN CONTROL CABLES IN HIGH-VOLTAGE SUBSTATION

Andrzej W. SOWA *, Jarosław WIATER **
*andrzejsowa@ochrona.net.pl **jarekw@bialan.pl
Electrical Department, Białystok Technical University

Abstract. This paper presents the numerical simulations of a direct lightning stroke into an open air high-voltage HV substation. Lightning current flowing through the conductive earthed structures over the ground and in earthing grids induced voltage and currents in low-voltage cables. These transients can cause severe problems (damages or misoperation) in control, measurement and secondary circuits. In calculation the different striking points and soil parameters have been taken into account.

1. INTRODUCTION

In HV substation the damages or malfunctions of the electric and electronic equipment were very often caused by:

- switching operations in primary circuits,
- earthing faults,
- lightning strokes.

Some investigations have been made in the area, which concern the interferences caused by high voltage switchyard operations. However, little is known about the nature of lightning transients in control, measurement and secondary low-voltage circuits.

This paper presents a computer analysis of impulse voltages and currents which were induced in low voltage wiring in the case of lightning stroke to the area of substation.

The problem with these lightning transients has been observed in HV substation with the increasing installation of advantage electronic equipment. This concerns specially the digital devices in high voltage measuring and controlling techniques. The older electro-mechanical elements were very well insulated and required sustained signals to operate.

This is the contrast to microprocessors base equipments that are more sensitive to overvoltages and overcurrents which appeared in control cables.

Most dangerous are the surges induced in wires between the electric and electronic equipment located in control building inside the HV substation and other in different points on the substation area.

In investigation the influence of cables routing, parameters of earthing systems and location of striking points were taken into account.

2. HIGH-VOLTAGE SUBSTATIONS

The energetic system being modeled is not located in urban area and consists of the following components:

- substation S1,
- overhead transmission HV lines between substations,
- substations S2 and S3, which were connected with substations S1.

On each station were the same arrangements of HV equipment and control cables. Distances between stations S1 - S2 and S1 - S3 were 3 km (see fig. 1.).

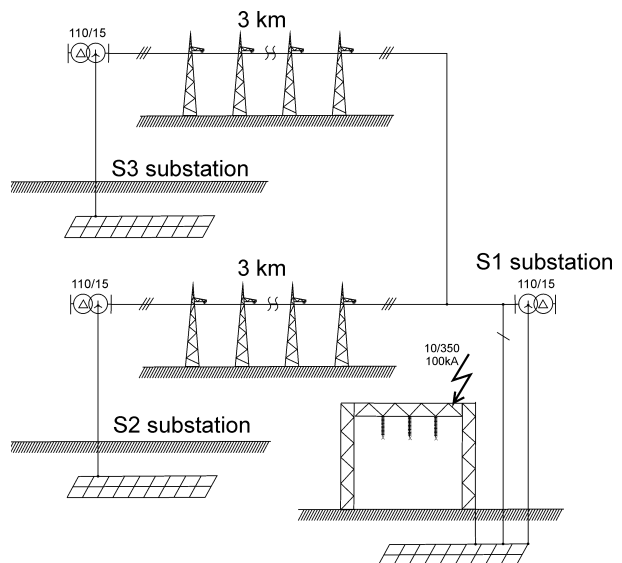


Fig.1. Typical distribution substations layout

A typical KSU 110/15 kV substation, which was precisely presented in paper [7], will be analyzed. The arrangements of control cables and same part of substation model are presented in Fig. 2.

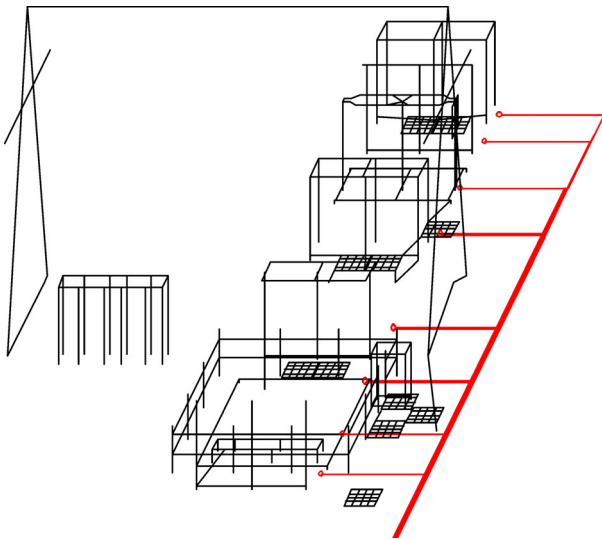


Fig. 2. The part of substation model with control cables

Mathematical model was employed for the prediction of induced impulses induced in control cables during a direct lightning stroke to the area of substation S1. The induced open circuit voltages and short circuit currents at the ends of cables in control building have been computed.

2.1. Earthing grids

The earthing system is considered to be an arbitrary network of connected buried conductors. The rectangular grid 107m x 62m is made of 6 equal space conductors along the X axis and 10 along the Y axis. Fig. 3. illustrates the earthing system adopted for analysis.

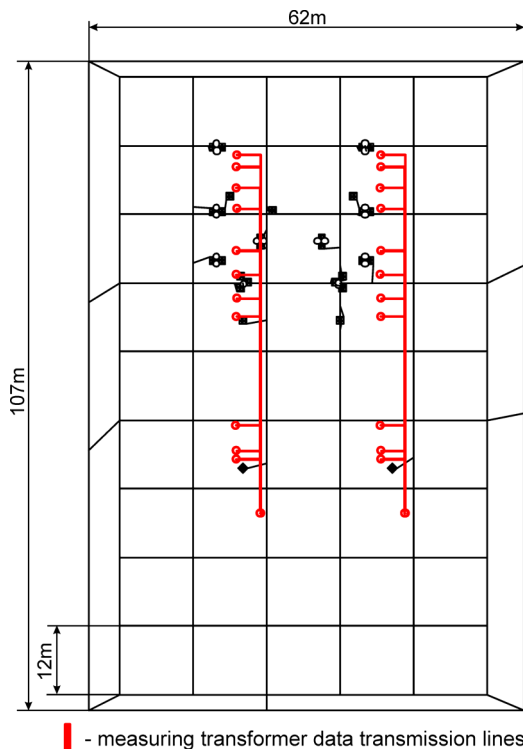


Fig. 3. Substation earthing grid with the control cables

All steel conductors with cross section 80 mm² were buried at 0,8 m depth in homogeneous soil (uniform ground model) with:

- resistivity $\rho = 100\Omega\text{m}$,
- relative permittivity $\epsilon_r = 1$.

The perimeter of the grid was placed such that the outermost conductors are located exactly 5 m outside the edge of the fence. The fence is regularly connected to the outermost conductors.

2.2. The source of disturbances

A direct lightning stroke is simulated by an ideal current source injected the surge current in different points of station's area.

In analysis, the lightning current has the following mathematical expression:

$$i(t) = \frac{I}{\eta} (e^{-\alpha t} - e^{-\beta t})$$

where:

- t - time
- α - reciprocal of time constant
- β - reciprocal of time constant
- I - peak current
- η - correcting factor

The parameters of the lightning current, for the first lightning stroke, were taken according to the IEC 61312-1 [8] for the III-IV protection level.

The parameters used in equation for obtaining the lightning current 100 kA, shape 10/350 μs are:

$$I=100\text{kA}, \eta=0,9761, \alpha=2049,38 \text{ s}^{-1}, \beta=563\,768,3 \text{ s}^{-1}.$$

In investigations the impulse currents were injected to the different points of earthed structures in HV substation.

3. NUMERICAL MODELLING

The analyses arrangements (fig.4) have been performed by the MultiFields [9], [10] software package, which is a part of CDEGS package.

The computation methodology assumes the frequency domain analysis, in which each conductor in the network is partitioned in small segments.

The segments should be short enough so, that the current is assumed to vary linearly along with the segment for all analysed frequencies, but they should be also large enough to meet the thin wire approximation. Each such segment is represented by an electric dipole located at its centre and the electromagnetic quantities at an observation point are obtained by the sum of the contributions from all of the dipoles.

The field of a single dipole is expressed as the sum of the source term, the image term and the Sommerfeld integral.

The Sommerfeld integrals have been computed by the Double-Integration method i.e. numerically, without any approximation [10].

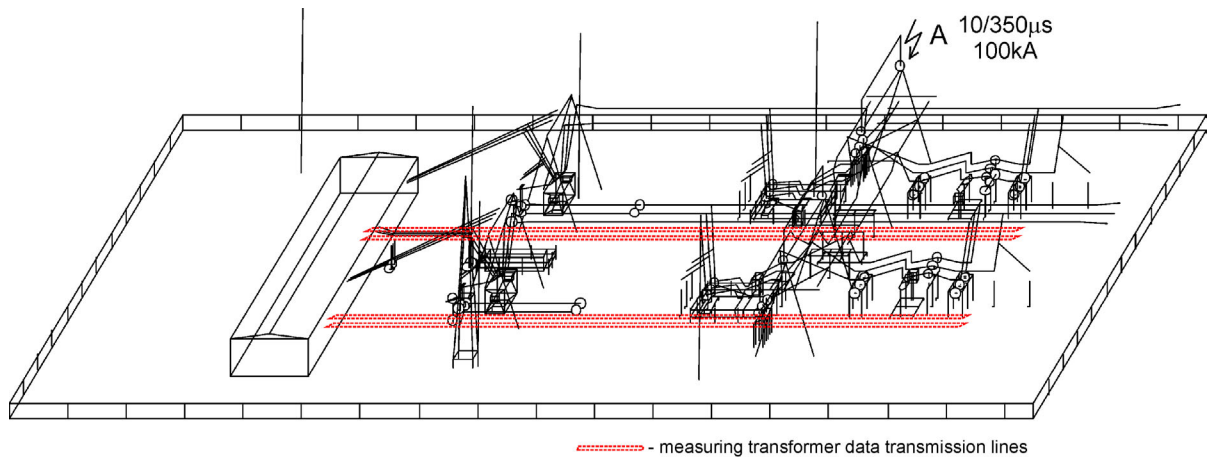


Fig. 4. Configuration of HV substation S1 during the lightning stroke

4. COMPUTATION RESULTS

The impulse voltages and currents at equipment interfaces in control building have been computed for the following shielded cables (fig.5.):

- lengths 62 m,
- distances between cables 10 mm,
- cables run above the ground on height 50 mm.

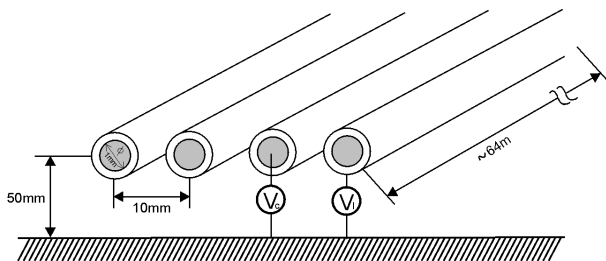


Fig. 5. Configurations for computing the short circuit currents and open circuit voltages

During the stroke into the substation S1 the lightning current is divided into:

- earthing system of substation S1,
- grounding wires (also named shielded wires) of HV lines,
- the earthing systems in station S2 and S3.

For determining the open circuit voltages and short circuit currents in signal cabling over the ground, two simple circuit configurations have been assumed:

- isolated cables,
- two cables shorted at the ends.

Example of short circuit current in signal cabling in substation S1 is presented in fig. 6.

For all arrangements of cables, which were calculated in station S1, the short currents did not exceed 10 A.

Additionally, fig.7 shows the short currents in cables which were in substations S2 and S3.

For isolated cables the impulse voltages which appeared in control building between the wires and local (V_C) or true (V_G) earth were calculated.

In analysed arrangements the impulse voltages V_G were much greater than V_C .

Some examples of impulse voltages V_G in substation S1, S2 and S3 are presented in fig. 8 and 9.

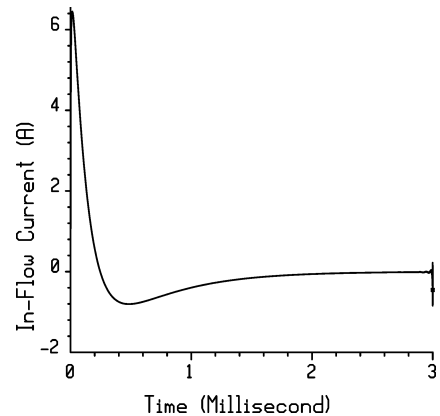


Fig. 6. Short circuit current in control cables in substation S1

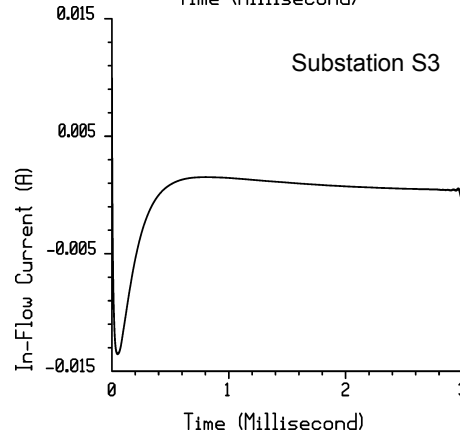
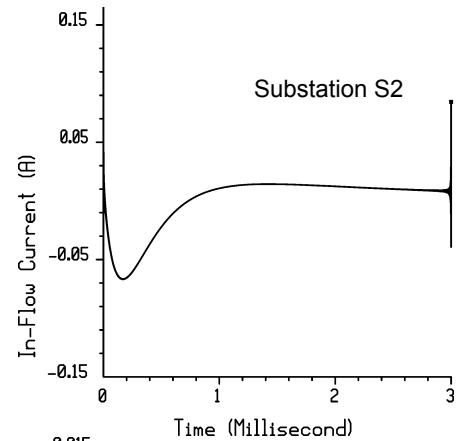


Fig.7. Short circuit currents in control cables in substations S2 and S3

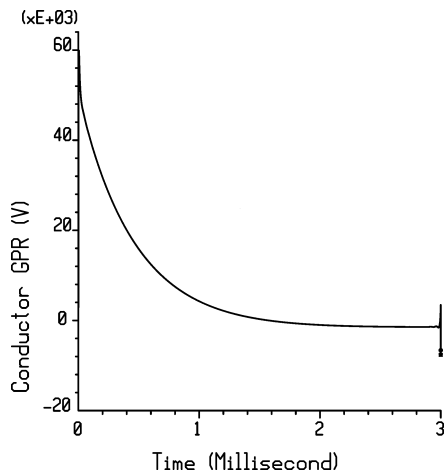


Fig. 8. Impulse voltage between the wire of cable and true earth (Substation S1)

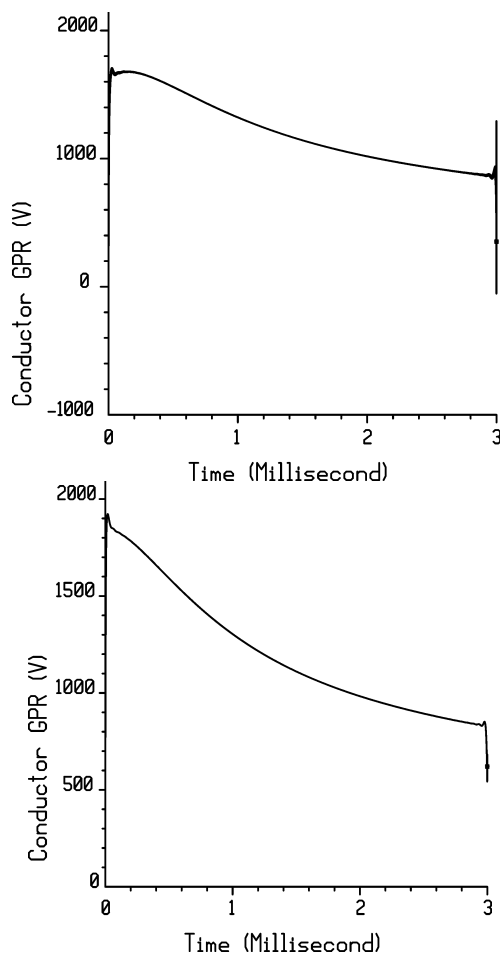


Fig. 9. Impulse voltages between the wires of cables and true earth (Substation S2 and S3)

In worst cases the voltage V_G reached the values 50-80 kV in substation S1 and 2-2,5 kV in substations S2 and S3.

5. CONCLUSIONS

In paper a method for computer analysis of lightning impulse currents and voltages in control cables is presented. The information about these impulses is very

important when electronic devices are used in HV substations.

The advantages of the proposal calculation of the HV substation are:

- all possible configurations of conductive elements on the station and different points of lightning stroke to the station's area can be represented in theoretical model,
- impulse voltages and currents in conductors over and under the grounds can be analyzed.

The study shown that, the magnitudes of surges can reach the values, which are dangerous for equipments.

REFERENCES

1. Grcev L.: Transient Voltages coupling to shielded cables connected to large substation earthing systems due to lightning. CIGRE 36-201, Session, 1996.
2. Grcev L.: Numerical analysis of the transient voltages near grounding systems. 21st ICLP, Berlin, Germany 1992.
3. Grcev L., Arnautovski V.: Transient Voltage Coupling to Cables in Metal Tubes. 22nd ICLP, Budapest, Hungary, 1994.
4. Lang U., Lindner H.: Protection of signal-processing equipment in high-voltage substation. Symposium on EMC, Zurich, pp. 423-428.
5. Ludwig S.G., Schuetz C.C. Coupling to control Cables in HV Substation.
6. Strnad A., Rohsler H.: Noise sources and interference values in high voltage substation. Symposium on EMC 85, Rotterdam.
7. Wiater J.: Distribution of the step and touch voltages at the typical HV/MV substations during lightning. XIII International Conference on EMD'2003, Bialystok 24-26.09.2003.
8. IEC 61312-1:1995, Protection against lightning electromagnetic impulse. Part 1: General principles.
9. "FFTSES User's Manual: Fast Fourier Transform" Safe Engineering Services & Technologies Ltd., Montreal Canada.
10. "HIFREQ User's Manual: Frequency Domain Analysis of Buried Conductor Networks" Safe Engineering Services & Technologies Ltd., Montreal Canada.

BIOGRAPHICAL NOTES

Andrzej W. Sowa received M.Sc. and Ph.D. degrees from Warsaw University of Technology in 1974 and 1979 respectively. Since 1978, he has been working in Technical University of Bialystok in the field of Electromagnetic Compatibility, particularly in lightning and overvoltages protection.

Jaroslaw Wiater graduated in power system at Electric Power System Faculty of Technical University, Bialystok in 2002. Main research area is application of computer technology in damage analysis at electric power substation during direct lightning strokes.